
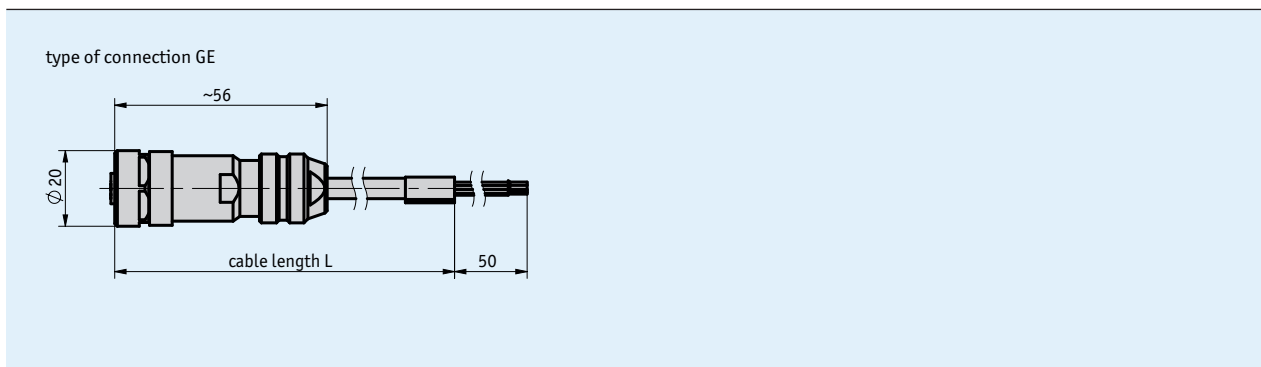
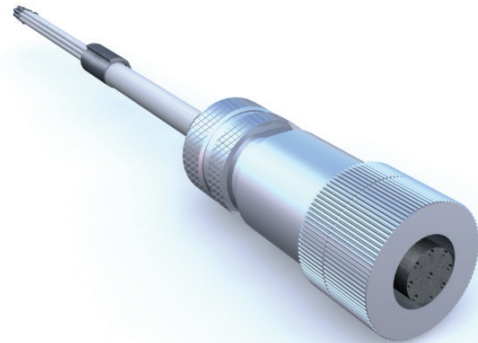


### Profile

- Ready-to-use cable connection
- Cable lengths up to 20 m
- Connection technology M12 (A-coded), 8-pole

 *Voltage drop should be envisaged with increasing cable length. This should be taken into account for the electrical design.*



### Mechanical data

| Feature      | Technical data | Additional information                        |
|--------------|----------------|---|
| Cable sheath | PUR            | 8x0.14 mm <sup>2</sup> , $\varnothing 5.4$ mm |

### Ambient conditions

| Feature             | Technical data | Additional information |
|---------------------|----------------|------------------------|
| Ambient temperature | -30 ... +90 °C |                        |

### Pin assignment

| Cable color | PIN |
|-------------|-----|
| white       | 1   |
| brown       | 2   |
| green       | 3   |
| yellow      | 4   |
| grey        | 5   |
| pink        | 6   |
| blue        | 7   |
| red         | 8   |

## Order

### ■ Ordering table

| Feature      | Ordering data | Specification               | Additional information |
|--------------|---------------|-----------------------------|------------------------|
| Cable length | ... A         | 1 ... 20 m, in steps of 1 m |                        |

### ■ Order key

KV08S2 - GE -

Scope of delivery: KV08S2