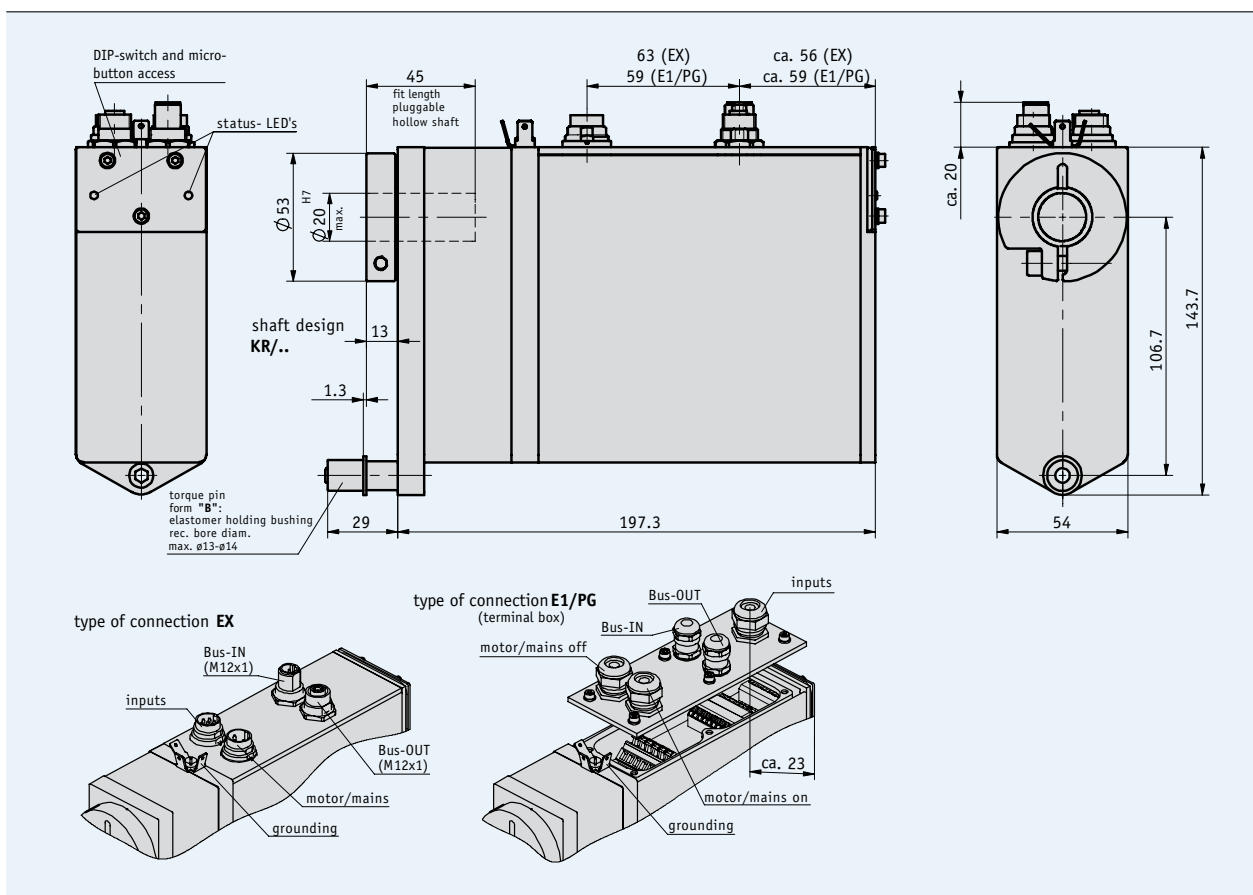


Profile

- Easy mounting
- Stainless steel hollow shafts up to max. \varnothing 20 mm
- "Manual" traveling without control via micro-button
- Brushless 160 W, 24 V DC motor with long service life
- Integrated magnetic absolute position encoder on the output shaft
- Electrical connection via spring terminals or connector
- Integrated positioning controller
- Integrated fieldbus interface
- Integrated spring-operated brake (option)



4.1

Mechanical data

Feature	Technical data	Additional information
Hollow shaft/clamp ring	stainless steel	Nirosta
Housing	aluminum	
Nominal torque	6 Nm, 150 rpm ($\pm 5\%$) 10 Nm, 90 rpm ($\pm 5\%$) 14 Nm, 64 rpm ($\pm 5\%$)	with $i = 30.6$ with $i = 50.0$ with $i = 70.8$
Shock resistance	50 g, 11 ms	DIN EN 60068-2-27
Vibration resistance axial, radial	10 g, 50 Hz	DIN EN 60068-2-6
Operating temperature	0 ... +80 °C	condensation inadmissible
Ambient temperature	0 ... +45 °C	
Operating mode	short-time operation S2, 25 % duty cycle	DIN 57530, VDE 0530 part 1
Interference protection class	category C3	EN 61800-3
Protection category	IP50, IP54, IP65	DIN VDE 0470
Weight	approx. 3.2 kg	

Electrical data

Motor/control data

Feature	Technical data	Additional information
Voltage supply	24 V DC $\pm 20\%$	with inverse-polarity protection
Power consumption, fed	approx. 160 W	
Rated current	6.5 A	with output value 100 %
Idle current	350 mA $\pm 20\%$	

Encoder data

Feature	Technical data	Additional information
Resolution	1024 increments/revolution	10 bit
Number of revolutions	254 4094	8 bit (rounded) 12 bit (rounded)

Pin assignment

Motor/network

Signal	EX	E1 (terminal)
+Ub	1	X1.1 X1.2
Enable	2	X3.5
GND	3	X1.3 X1.4
Screen		X1.5 X1.6

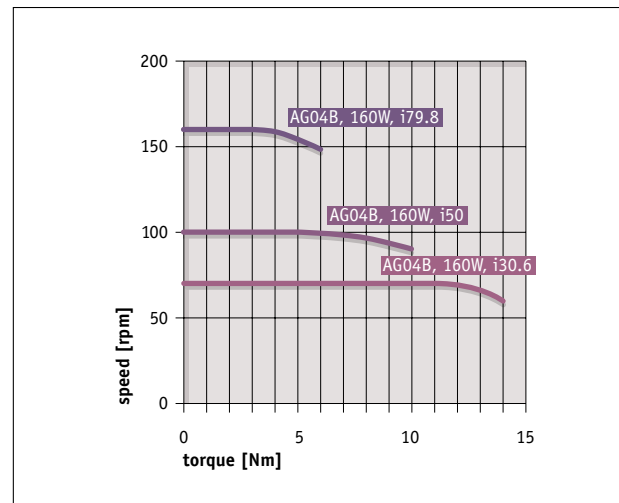
Fieldbus

Signal	EX	E1 (terminal)
do not connect!	1	
BUS A	2	X2.2, X2.9
do not connect!	3	
BUS B	4	X2.1, X2.10
do not connect!	5	X2.3, X2.4, X2.5, X2.6, X2.7, X2.8

Inputs

Signal	EX	E1 (terminal)
Limit switch 1	1	X3.1
Limit switch 2	2	X3.2
Input 1	3	X3.3
Input 2	4	X3.4
N.C.	5-7	
Enable		X3.5
EXT_GND		X3.6
GND		X3.7

Performance curve



Order

Order table

Feature	Order data	Specification	Additional information
Gear ratio	70.8	i = 70.8	approx. 14 Nm at 60 rpm
	50	i = 50.0	approx. 10 Nm at 90 rpm
	30.6	i = 30.6	approx. 6 Nm at 150 rpm
		others on request	
Motor/brake	160W/MB	160 W EC motor with brake	
	160W/OB	160 W EC motor without brake	
Protection category	IP50		
	IP54		
	IP65		
Shaft design/diameter	KR/20	clamp ring Ø 20 mm stainless steel hollow shaft	
	KR/14	clamp ring Ø 14 mm stainless steel hollow shaft	
		others on request	
Type of connection	EX	industry connector (2x M12, 2x M16)	without network output
	E1/PG	terminal box (5x PG9)	with network output
Number of revolutions	254	8-bit (rounded)	254 revolutions
	4094	12-bit (rounded)	4094 revolutions

4.1

Order code

AG04B - - - - - B - - - PB - SW

A
B
C
D
E
F

Scope of delivery: AG04B, User information, CD (manual, GSD file)

Accessories:

Mating connectors
S7 module

Page 44
on request

Additional information:

General information and areas of application

Page 4 cont.